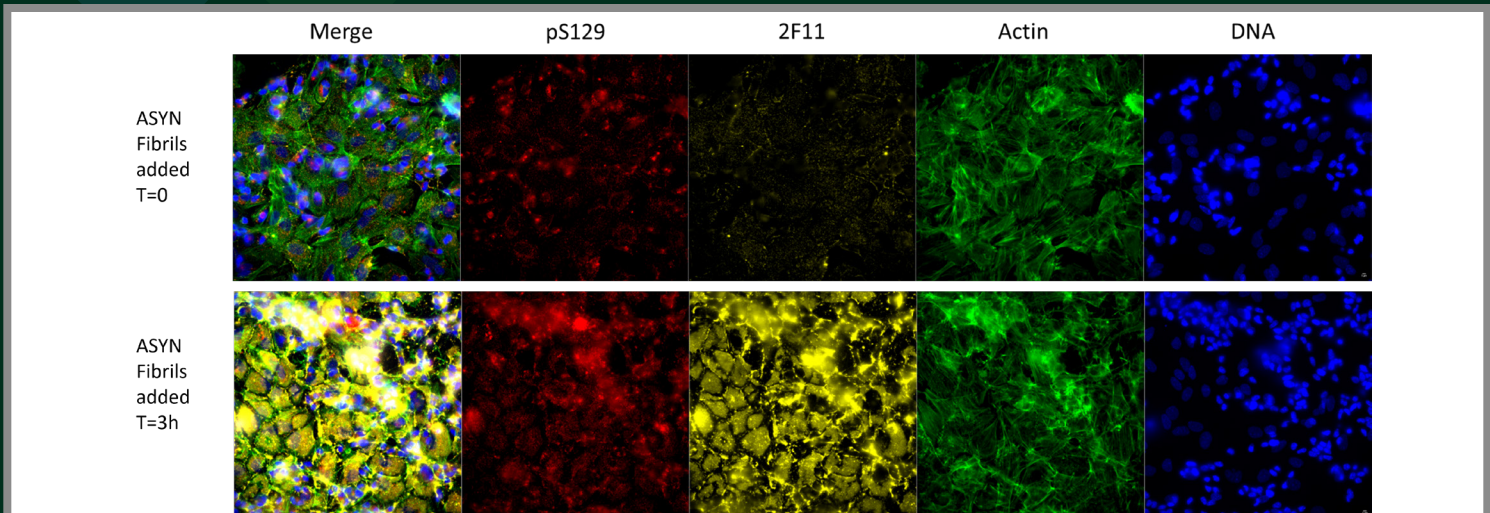


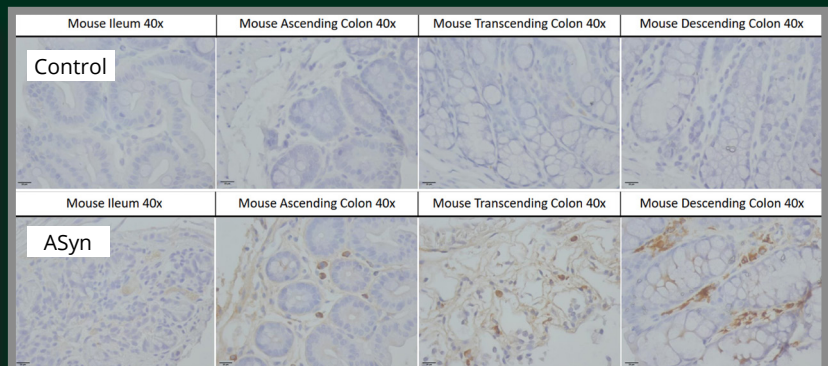
NEW! Alpha Synuclein Aggregate Antibody [2F11]

Antibodies for Neurodegenerative Disease Research



Top: 8 day differentiated SH-SY5Y cells. Alpha synuclein monomers do not bind Alpha Synuclein Aggregate Antibody [2F11] (1:1000) while alpha synuclein fibrils demonstrate, **clear, strong binding**.

Right: Gut samples from mice injected with human Parkinson's disease brain-derived alpha synuclein. Alpha Synuclein Aggregate Antibody [2F11] (1:1000) **stains alpha synuclein aggregates**.

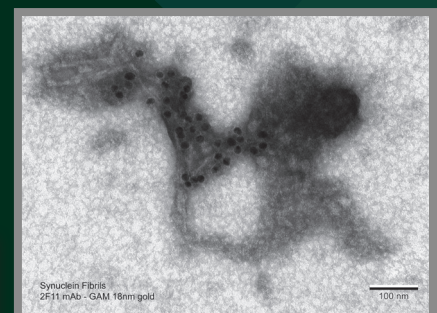


*StressMarq's Anti-Mouse Alpha Synuclein Aggregate Antibody [2F11] binds a 3-dimensional epitope including AA101-120 & AA61-80. ECL immunoblot analysis confirms **detection and binding of alpha synuclein aggregates**.*

Target	Clone	Host	Applications	Reactivity	Catalog #
Alpha Synuclein (Aggregate-Specific)	2F11*	Mouse	WB, DB, IHC, ICC-IF, ImmunoGold labelling	Human, Mouse	SMC-617



Right: ImmunoGold electron micrograph of sonicated Alpha Synuclein Fibrils (SPR-322) stained with 2F11 Antibody (1:400).



***Protected under US Patent Family US11,098,108 B2**